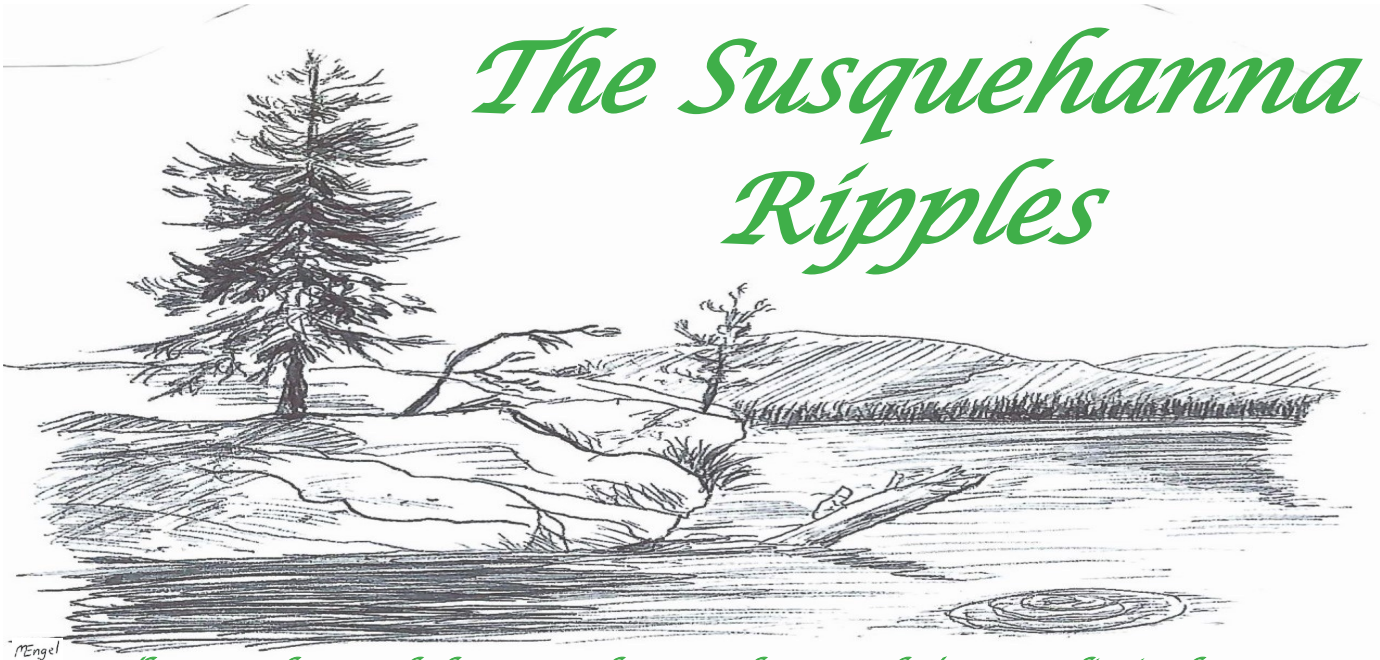


The Susquehanna Ripples



The Newsletter of the Susquehanna Chapter of Trout Unlimited #044

Program on Nymphing to be Featured at Trout Unlimited Susquehanna Chapter Meeting

The public is invited to a meeting of the Trout Unlimited Susquehanna Chapter featuring a program entitled “Diversified Nymphing”, presented by Dave Rothrock. While Euro Nymphing is the “craze of the day”, it is important to understand that any technique has its limits. We’ll take an in-depth look at various techniques to address a variety of conditions. We’ll also discuss tackle, flies, and applications which, when coupled with these techniques, can increase the effectiveness of any angler.

Dave has been pursuing trout and other species with a fly rod since the mid-1960’s and he’s been tying flies for a bit longer than he’s been fishing them. He has fished throughout the East, into the Midwest and Europe where he has fished great waters in Austria and Slovenia. Dave’s articles have appeared in Fly Fisherman, American Angler, and Pennsylvania Angler magazines, as well as other publications. His fly patterns have graced the pages of various publications, books and calendars. He has presented programs on fly fishing related topics to groups throughout the Eastern U.S. and Canada. Dave is also a co-author of the book “Keystone Fly Fishing”: The Ultimate Guide to Pennsylvania’s Best Water. He also authors his website blog at www.therantingangler.com. In 2004 Dave and George Daniel teamed together to compete in the northeast regional qualifier for Barrett Production’s Fly Fishing Masters competition. As a team they placed 1st out of 36 teams in the 2-day casting competition. Dave is a former Orvis Endorsed Guide, as well as a former FFI Certified Casting Instructor. He has worked as an instructor in the L.L. Bean fly fishing schools and has taught fly fishing, casting and fly tying classes for various fly shops and groups. Dave currently guides and

teaches fly fishing and casting through his business, Salmo-Trutta Enterprises, as well as being on the staff of Sky Blue Outfitters. He utilizes many of the best trout streams in central and north central PA as his classroom environment. Dave also serves as an Ambassador Pro with Douglas Outdoors and also serves on the Pro Staff of HMH Vices, Cortland Line and Flystones.

The meeting will be held on **Wednesday, March 13th at 7:00 pm at the Covenant Central Presbyterian Church, 807 W. 4th Street, in Williamsport.** Parking and entrance to the Church is at the rear of the building with access off of Campbell Street.

For more information, please see our website at <https://susquehannatu.com>.



Chapter Contacts

President

Stephen Martin
sam667@verizon.net

Vice President

Jim Latini
17ftkayak@gmail.com

Secretary

Kevin McJunkin
kevinmcjunkin@comcast.net

Treasurer

Bob Baker
boblbaker@comcast.net

Board of Directors

Charlie Knowlden (2024)
John Kolb (2024)
Mike Ditchfield (2025)
Joe Radley (2025)
Bill Worobec (2026)
Dave Walter (2026)

Director Emeritus and Chapter Adviser

Dave Craig

Chapter Advisor

Steve Szoke

Past President / Financial Reviewer

Walt Nicholson

Conservation/Legislative Affairs Chair

Dave Walters

Membership

Bob Baker

Service Partnership Coordinator

Charles Knowlden
ckknow@comcast.net
(570)971-1296

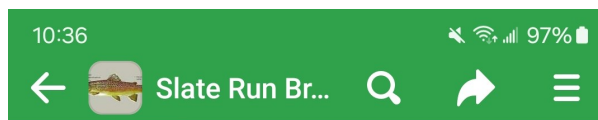
Youth Committee

Wes Harvey Co Chair
Asher Ulmer Co chair

Newsletter Editor/Webmaster

Bob Baker
boblbaker@comcast.net

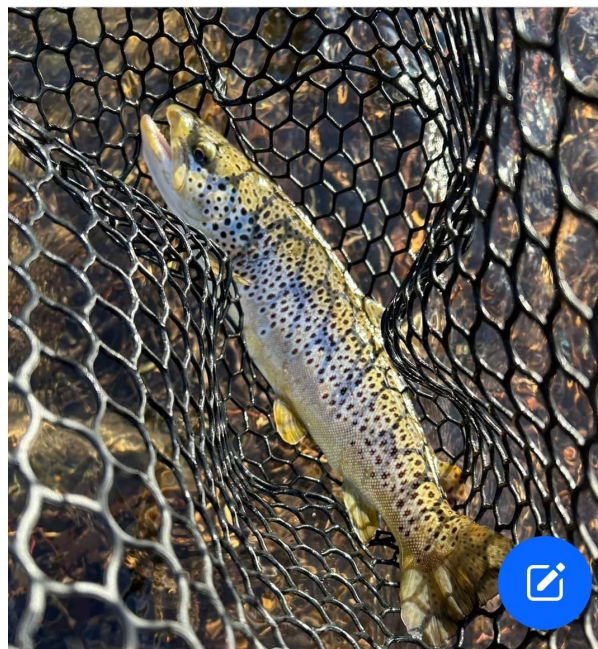
Web page: susquehannatu.com
Email: susquehanntu@gmail.com



The Brown Trout Club plans on stocking Pine Creek's Stretch on Saturday, March 9, 2024.

Volunteers can meet at Wolfe's General Store at 10 a.m. Well behaved youngsters are welcome to help provide that they are dressed for the conditions and accompanied at all times by a parent or other responsible adult.

Don't forget to make your contribution in support of the stocking. Pins and license plates are available



Our Official Newsletter

The **Susquehanna Ripples** is the official newsletter of the Susquehanna Chapter of Trout Unlimited. It is published 8 times a year: January, February, March, April, June/July, September, October, and November. Please consider submitting something of interest to our readers; a story, stream report, recipe, photograph, gear review, etc. Submissions received will be placed in the next available issue. All submissions can be sent to susquehannatu@gmail.com / boblbaker@comcast.net.

Chapter meetings are held on the 2nd Wednesday of each month (unless otherwise noted) and are always free and open to the public and begin at 7:00 pm . Meetings are held at the **Covenant Central Presbyterian Church, 807 W 4th St, Williamsport, PA 17701**, in the Fellowship Hall (unless otherwise noted). Parking is at the rear of the Church and enter off of Campbell Street.

No meetings are held in May, June, July, August or December



A Message from the
PRESIDENT

As I set down to write this message, the sun is shining and the temperature is Spring-like. The melodious honking of geese can be heard overhead; their graceful lines and rhythmic wingbeats propelling them north. Cardinals, chickadees, and titmice add to the outdoor symphony. Spring has sprung and with it, hope and expectations for the coming year.

Spring is a time of re-birth, renewal, and excitement! Fishing season is just around the corner, as the great, white fleet of stocking trucks begin to roll. Plans are made and anticipation grows! As fishermen and women, we are truly blessed to live in Pennsylvania, as our state has more miles of streams and rivers than any state in the nation besides Alaska. It's easy to take for granted the sheer multitude of fishing opportunities we have before us on any given day, as well as the water quality in our streams, the beautiful scenery that abounds, and the variety of fish, birds, and wildlife. In addition, PA contains over 4.5 million acres of public land. We have truly been blessed with awesome resources and opportunities, but with that blessing comes an equally awesome responsibility to preserve, protect and perpetuate it all. Not only for ourselves, but for the generations that will follow us.

So, what can I do to help? How about participating in a litter pick up? April is the month of Earth Day and accordingly many such pick ups are scheduled throughout our region in April. Keep an eye on the newspaper, social media, or check out keppabeautiful.org for a pick up near you. How about helping the PA Fish & Boat Commission stock trout? In 2024 the PFBC will stock 3.2 million trout in 697 streams and 129 lakes. This does not happen without a lot of hard work and anyone is welcome to help carry buckets of fish from the stocking trucks to the water. No experience is required. Stocking schedules for each county are posted on the PFBC website. How about introducing a child, youth or non-fishing adult to fishing? Many of those setting on the sidelines just simply need someone to ask them. And lastly, if not already a member, how about joining a conservation organization, a watershed group or sportsman's club that works to preserve, protect, enhance and advocate for our natural resources? There are many great organizations in our area that are doing very impactful work.

We at Trout Unlimited actively seek and welcome new members, but I would also encourage our existing members to become more active in the Chapter. Membership of the Susquehanna Chapter currently stands at over 325, but as with so many volunteer organizations these days, few members are active. Please consider attending our monthly meetings, which are the 2nd Wednesday of the month, September through April. We always strive to have a good program and non-members are always welcome. Maybe consider helping out with a TU project or activity. We would so love to have you join us in person, rather than in name only. Together we can accomplish even greater things!

Finally, be safe and have fun out there. I do hope to see you along the stream. Good fishing!

Steve Martin
President – Susquehanna Chapter of Trout Unlimited



PA State Representative Jamie Flick will be hosting a Fishing with Flick event on Saturday March 30, 2024 on Lycoming Creek behind Bowman Field. This event is being held in conjunction with the Statewide Mentored Youth Trout Fishing Day. The Susquehanna Chapter will be there from 10 am until 2 pm to help and will have out Velcro fishing pond for the younger kids. Representative Flick's office is working with the Fish and Boat Commission on this and fishing will be along Lycoming Creek behind Bowman Field. There will be a limited number of rods and reels available to use and you are welcome to bring your own.

We need your help to make this event a success. We will be baiting lines, teaching casting, helping reel in and net fish, answering questions, helping with the Velcro fish pond, and anything else that may need done. The most important thing that is we have individuals watching over everyone on or near the water to keep everyone safe.

**Veterans Service Program Report
March 2024**

By: Charlie Knowlden

The chapter currently had in inventory, two 9' 4-piece 5 wt. fly rod kits and two 9' 2-piece 5 wt. fly rod kits available for any veteran or first responder who wishes to build one. We recently received a donation from the Anglers Pro Shop in Souderton, PA. The owners are going out of business and generously provided us with a pickup truck load of fly tying and rod building supplies and materials. The rod blanks will be used in the VSP for anyone eligible to build a fly rod. This inventory includes an additional ten 5 to 8 wt. fly rods, five 10 wt. fly rods, all in the 8 ½' to 9' length. In addition, there are ten spey rod blanks in 12 ½' to 14' lengths. We purchased handles, reel seats and guides for the rods up to 8 wt. That gives us 14 complete kits. I am available to set up a class with a maximum of five participants or work individually with any interested person(s). They can contact me at: or (570)971-1296. The additional supplies will be used in the fly tying classes or will be offered for sale. This may include some of the rod blanks in addition to the other supplies and equipment that have been donated previously. There are also five boxes of books on fishing, lure making, and fly tying that are available. Some of the books will be kept for our library and others will be donated to various libraries that show an interest.

Joanne and Eddie Notarangelo

Mrs. Notarangelo contacted our Chapter and said that she and her husband were closing their store, Angler's Pro Shop (in Souderton, PA) and wanted to donate the remaining inventory to our Chapter. Charles Knowlden and Kevin McJunkin arranged a time to meet with the Notarangelo's and travelled to Souderton to pick up the items and came back with a very full truck of items. Many items have already been inventoried and organized.



Kieth Hammonds

From Baltimore, Mr. Hammonds found our website on the internet and contacted us. He donated a box of reels.



The Susquehanna Chapter of Trout Unlimited wants to thank everyone who has generously donated to our Chapter. Without your generosity, we would not have the funds available to do the things that we do and to support similar organizations in their efforts. We are truly appreciative of everyone.

Welcome New Members

Avery Masters

Hunter Hessler

John Zydallas

Our current membership stands at 321 individuals. Please consider joining Trout Unlimited and becoming part of our Chapter. There are no set time requirements and we only ask for your help and what ever time you can give is appreciated. Please contact us to learn ways you can help.

April 11, 1985

~ Tall and True ~ by Robert Rinn

There is an important prelude to the beginning of trout season. Flies and leaders must be tied, boots patched and rods repaired. Proper planning usually includes the purchase of something, whether or not it is unnecessary baggage.

Trout flies always need rearranging and those favorites from last year require special attention. Ah ha, a plain unfeathered hook in the assortment -- a reminder to dig worms! Fly fishing has a vast following of scribes, poets who seem to know of nothing else. Fishing with a worm has received little attention from the wordsmiths.

I started an outdoor career with a basic understanding of fishing with bait. My six-year-old grandson is progressing along the same trail. Fishing, for him, is divided into two parts. First, the procurement of the proper worms. Not every worm will do: The correct size and color are important. Sometimes a discussion with the fisherman is required before a candidate may become qualified for the can.

The second part is the actual fishing, which involves prodding a frog into action, watching a dragon fly skip among the reeds, slipping in the mud and falling in the mud. Fancy hooks mean nothing since they do not

catch fish -- worms do.

There are some fishermen who always fish as if they were about to be photographed for a calendar. The classic sweep of their line and alert posture denote an acute belief of what angling is supposed to be. A stylish vest and waders pulled up to armpit height may exude an air of experience, but do not sanction a downward glance at the worm box carried by another. I've been there and have concluded that no one should condemn any legal method of catching fish.

I know for a fact that some well-appointed fishermen would be ill at ease on a small brushy brook where traditional casting is impossible. Such situations require a total disregard for textbook technique. To watch an experienced worm fisherman on a little brook is like watching Winslow Homer complete one of his woodland scenes.

The most effective defense of worm fishing is found in the recollection of some pool that could only be fished in that way. Lovely streams, enticing streams, but impossible to fish with fly or lure, are awaiting the fisherman who is not too proud to use fundamental tackle. The rod is usually eight or nine feet long, which enables a baited hook, on a short line, to be introduced

into a pocket of water under the alders or hemlocks. The unlucky fish is simply derricked onto the bank.




Is the worm fisherman a meat fisherman? No more than most of the others. The undersized trout must be treated with great care and we soon learn how best to release those fish not destined for the creel. If the trout are running below the size limit, a new area must be selected.

Patience is the most useful tool for the simple pleasure of fishing with a worm. Progress is slow in areas penetrated by few people, but the very nature of this endeavor is conducive to a relaxed attitude. A true fisherman's happiness is not dependent upon his method or his luck. It depends upon his heart.

This article was submitted by Kevin McJunkin and used with permission by Bob Rinn's daughter Melanie

COMMONWEALTH INLAND WATERS

COMMONWEALTH INLAND WATERS-2024

Species	Seasons	Minimum Size	Daily Limit
ALL SPECIES OF TROUT  Additional regulations may apply- see Trout Regulations-pages 23-36. See pages 16-17 for stream sections that are both Stocked Trout Waters and Class A Wild Trout Waters.	Statewide Opening Day of Trout Season - April 6 at 8 a.m. through Sept. 2	7 inches	5-streams, lakes and ponds (combined species)
	Extended Season: Stocked trout waters Jan. 1 through Feb. 18 and Sept. 3 through Dec. 31	7 inches	3 (combined species)
	Extended Season: Waters not managed as stocked trout waters. Jan. 1 through Feb. 18 and Sept. 3 through Dec. 31	NO HARVEST - Catch and immediate release only	
BASS - Lakes, Rivers and Streams Largemouth, Smallmouth and Spotted Additional regulations may apply- see page 11	Jan. 1 through April 12 and Oct. 1 through Dec. 31	15 inches	4 (combined species)
	April 13 through June 7	 NO HARVEST - Catch and immediate release only (no tournaments permitted). NO HARVEST begins at 12:01 a.m.	
Muskellunge and Tiger Muskellunge*	June 8 through Sept. 30	12 inches	6 (combined species)
	Open year-round	40 inches	1 (combined species)
Pickeral*		18 inches	4
Northern Pike*		24 inches	2
Walleye and Saugeye (Hybrids)		15 inches	6
Sauger	Jan. 1 through March 14 and May 4 through Dec. 31	12 inches	6
American Shad**	Open year-round	No minimum	3
American Shad	Open year-round - Lehigh River, Schuylkill River*** and tributaries	NO HARVEST - Catch and immediate release only	
American Shad	CLOSED YEAR-ROUND		
River Herring**	Susquehanna River and tributaries		
Hickory Shad**	CLOSED YEAR-ROUND		
Herring, Gizzard Shad	Open year-round	No minimum	50 (combined species)
American Eel	Open year-round	9 inches	25
Striped Bass and Striped Bass/ White Bass Hybrids	Open year-round	20 inches	2 (combined species)
Sunfish, Yellow Perch, White Perch, Crappies, Catfish, Rock Bass, Suckers, Carp, White Bass, Bowfin and other gamefish not otherwise listed Additional regulations may apply- see Panfish Enhancement Special Regulations-page 15	Open year-round	No minimum	50 (combined species)
Baitfish/Fishbait**** (except Mudbugs/includes Crayfish)	Open year-round	No minimum	50 (combined species)
Mudbugs (Dragonfly Nymphs)	Open year-round	No minimum	Unlimited if taken from lakes, ponds, swamps and adjacent areas. 50 per day if taken from moving waters (rivers and streams).
Mussels/Clams	CLOSED YEAR-ROUND		
Paddlefish, Spotted Gar, and other threatened and endangered species	CLOSED YEAR-ROUND		

SEASONS, SIZES AND CREEL LIMITS – Except for trout season, which begins at 8 a.m., all regulatory periods in the fishing regulations are based on the calendar day, one of which ends at midnight and the next of which begins immediately thereafter.
 * Except those species in waters listed in the **Brood Stock Lakes Program**. Tiger Muskellunge is a muskellunge hybrid.
 ** Unlawful to take, catch or kill American Shad in the Susquehanna River and all its tributaries. River Herring (Alewife and Blueback Herring) has a closed year-round season with zero daily limit applied to Susquehanna River and tributaries, Lehigh River and tributaries, Schuylkill River and tributaries, West Branch Delaware River, Delaware River, Delaware estuary, Delaware River tributaries upstream to the limit of the tidal influence and Conowingo Reservoir.
 *** Lehigh River upstream of the first dam in Easton, Pennsylvania and its tributaries and the Schuylkill River upstream of the I-95 Bridge and its tributaries.

NOTE: It is not a violation of the bass regulations if a bass is immediately returned unharmed to the waters from which it was taken. It is unlawful for an angler to cast repeatedly into a clearly visible bass spawning nest or redd in an effort to catch or take bass.
NOTE: For bass regulations, power dam pools and recreational dam pools on the Susquehanna River and navigational dam pools on the Ohio River drainage are "rivers." It is unlawful to conduct a fishing tournament on the North Branch, West Branch or main stem of the Susquehanna River that allows a tournament angler to harvest bass.
NOTE: Stocked trout waters are closed to fishing from February 19 to the opening day of the regular trout season in April, unless included in the **Stocked Trout Waters Open to Year-Round Fishing Program**.
NOTE: Landlocked Alewife less than 8 inches in length taken from inland ponds, lakes or reservoirs that are collected by legal means may be harvested for use as baitfish.
NOTE: It is illegal to fish for trout in Class A streams year-round, with no harvest beginning the day after Labor Day to the opening day of

trout season the following year. The exception is those stream sections designated as both Class A Wild Trout Streams and Stocked Trout Waters (Miscellaneous Special Regulations—see pages 16 and 17). These stream sections are closed to fishing from February 19 until 8 a.m. on the opening day of trout.
 **** **BAITFISH** includes all forms of minnows; suckers, chubs, Fallfish, lampreys; Gizzard Shad 8 inches or less; and all forms of darters, killifishes and stonecats (except those listed as threatened or endangered species). Legally taken gamefish may be used as bait. It is unlawful to use or possess goldfish, comets, koi and Common Carp as baitfish while fishing. **FISHBAIT** includes crayfish, crabs and the nymphs, larvae and pupae of all insects spending any part of their life cycle in the water.
For all crayfish species, the head must be immediately removed behind the eyes upon capture unless used as bait in the water from which taken.

**Susquehanna Chapter Trout Unlimited (SCTU)
February 15, 2024 Meeting Minutes**

**Covenant Central Presbyterian Church
Williamsport, PA**

Attendees: approximately 25 (see sign in sheet)

President Steve Martin opened the meeting at 7:00 PM. He announced that Dave Rothrock will be giving a program about nymph fishing at the March 13th Chapter Meeting.

Program – PA Fish & Boat Commission (PFBC)

Steve introduced Commissioner Eric Hussar, who represents the 5th District on the PFBC, which includes Tioga, Lycoming, Bradford, Sullivan, Columbia, Montour, Northumberland, Snyder and Union Counties; and three Waterway Conservation Officers - Jeremy Yohe, Justin Boatwright, and Hunter Shoemaker – covering Clinton, Lycoming, Sullivan, and western Bradford counties.

Topics of discussion included news and updates regarding fishing regulations, approved trout waters, special regulation fishing areas, stream access, and fish stocking.

1. The Loyalsock Sandy Bottom Delayed Harvest area will receive a fall stocking.
2. PFBC and SCTU are cooperating with the Hughesville High School Fly Fishing Club on a stream cleanup on March 3rd. Will meet at 1 PM at the HHS parking lot and then will disperse to five locations.
3. A Children's and Disabled Fishing Area will be established at the easily accessible Picture Rocks beach on Muncy Creek for the first two weeks of the season – a good compromise allowing adults and other to fish this popular stretch after that.
4. Gray's Run between the bridge and the Hunting Club is Class A and has been reposted as a Catch and Release area. Fisheries Division will be sampling the stretch downstream from the bridge to the mouth.
5. Little Bear will continue to have a Children and Disabled Access site for the first 4 weeks of the season.
6. Rose Valley Lake dam will be upgraded from 100 year to 500 year flood capacity. Project is still in the planning stages, will take another two years. There will be a complete drawdown. PFBC will need help collecting and relocating fish. Additional habitat structures will be added. Hopefully will result in an improved fishery.
7. Trout stocking will start March 15. Why so late, asked Dave Rothrock? Since the opening date is now the same throughout the State, the stocking schedule had to be compressed. They are trying to do more float stocking to get fish into areas not accessible by stocking truck.
8. Representative Jamie Flick will be holding a fishing day for city kids at Bowman Park on March 30. Volunteers are needed to help. Would be good if the Fish Commission could stock that stretch for this event.
9. PFBC expressed appreciation for the cooperative nurseries in the area. They need to complete a stocking notification starting this year, although it is a short form and shouldn't take too long to complete. The main purpose of the report is to make sure that invasive species aren't being introduced.
10. The Lycoming Creek Consolidated Sportsman donated the additional equipment needed to start up a Trout in the Classroom project at Hughesville Public Library, piggybacking on the purchase of a starter kit by SCTU. SCTU will be donating fishing books to the Hughesville and Sullivan Co. libraries.
11. Baker Run and Hyner Run above the campground are Class A and have been removed from the stocking list. Paddy Run, near Renovo, will be stocked.
12. Life jackets are mandatory for boating from Nov. 1 – April 30 for cold-water safety.
13. Sam Caldwell from Lycoming Creek Anglers Club asked about Sandy Bottom losing their allocation of trout. Where were they allocated? WCO's did not know and will follow up with Jason Detter.
14. Walt Nicholson noted that Mill Creek (Loyalsock tributary) above Hillsgrove has been scoured and there is very little suitable habitat for stocking big rainbow trout – recommended that they be re-allocated to the main stem.
15. Joe Radley mentioned that there will be a project to restore the bank at the Muncy Creek Delayed Harvest Area.
16. Steve Martin asked about Little Pine access. There has been no change to the posting in the Carsontown area. WCO's stated that private access has been limited despite their substantial efforts but you can still access at Otter Run or at the bridge. Also, you can legally fish it if you are below the high water mark.
17. Walt cautioned the PFBC about designating areas as Keystone Select without prior coordination with private landowners due to the increased fishing pressure that results from increased social media exposure. We have also lost a mile of access on the Loyalsock following Keystone select designation.
- 18.

Continued on next page

18. Eric Hussar commented that Penns Creek residents seem happy with Section 5 of Penns Creek being removed from the stocking list. Stocking areas were extended downstream. Wild trout populations have improved and there is less litter.
19. Bald Eagle Creek is now catch and release for Brown Trout. Walt would like for it to be removed from the stocking list or change the regulations so that the hatches could be fished before the season starts on March 19th. Eric Hussar took it under advisement but responded that nearby Spring Creek is available to fish during this period.
20. PFBC is cooperating with the Beech Creek restoration project – sees a lot of potential for this stream
21. Walt commented about the Class A general regulations still allowing 5 wild fish to be killed. Kevin McJunkin commented about the apparent difference in the fish population of Rauchtown Creek, managed as a Catch and Release, and another similar public access wild trout stream just over the ridge, which is under general regulations.
22. Walt said there needs to be more communication between the PFBC and the public about access. For example, there are buyout properties on Lycoming Creek at Powy’s that are open to the public but not generally known. Also, the booklet and map for the Loyalsock needs to be updated. Parts of the section are not stocked.
23. Walt expressed concern about angler/boat conflicts. There is a “plastic hatch” on Pine Creek. You can’t fish after noon on Bald Eagle Creek in the summer. Penns Creek boat traffic increasing. Needs to be education about proper stream etiquette.
24. Walt said that DCNR and the Governor are promoting more tourism in rural resource areas, such as expansion of ATV access, but not pushing education about how to behave, especially in private areas that could result in more posting. Eric Hussar acknowledged Walt’s concerns and said communication/coordination between agencies has been a long standing problem. Walt said that the gas pipeline in Lycoming County that cuts through the headwaters of nine different wild trout streams instead of following existing roads is an example of the lack of coordination.
25. Eric Hussar said he appreciates the jobs the WCO’s are doing but it is hard to recruit and retain them as well as deputies, when competing with the private sector.
26. Eric Hussar said he just got reinstated to the PFBC. He said that the General Assembly in PA has the second highest number of representatives and there is lot of turnover. He tries to keep legislators in his district informed.
27. License sales are back to pre-COVID levels. They were able to secure a small license fee increase after 18 years with no increase. He thanked us for our support.
28. Steve Martin asked about stocking of muskies in Pine Creek. He had heard that they weren’t stocked above Waterville although one of the WCO’s said he thought that some small muskies were stocked from Galeton downstream. He also said that muskies can work their way up Pine Creek naturally from the West Branch and that the Pine Creek main-stem is not considered good habitat for bass and trout.
29. Justin Boatwright said that the WCO’s are out patrolling the waterways unlike many other agencies but can still use help by reporting environmental problems or suspicious activities. He mentioned the Lock Haven fish passage project, and closed by saying that a lot of good things are going on.

Charlie Knowlden drew tickets and distributed door prizes.

The next Chapter meeting will be held on March 13th.

Meeting adjourned at approximately 9:00 PM.

Respectfully submitted,

Kevin McJunkin, Secretary

3.2 MILLION REASONS TO FISH

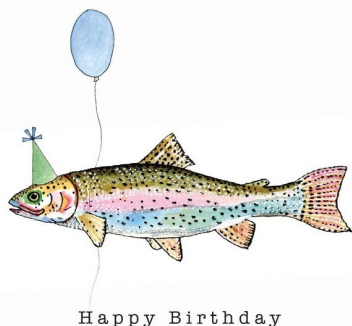
That's how many **adult trout** we will stock in **2024** in **695 streams and 128 lakes**.
Average size: 11 inches

Plus, 1.2 Million trout stocked by **cooperative nurseries**.

2.3 Million Rainbow Trout
702,000 Brown Trout
132,000 Brook Trout
14,000 Golden Rainbow Trout <small>(75% stocked before opening day)</small>

72,000 trophy-sized Rainbow Trout, Brown Trout and Brook Trout.
Trophy size: 14 to 20 inches
(70% stocked before opening day)

FishandBoat.com



On March 14, 2024, our Chapter is celebrating its 60th birthday since receiving our Charter from Trout Unlimited in 1964. In those 60 years, we have accomplished a great many things because of the hard work of our members, friends, and partners. Each year, our waterways are facing new challenges and we work hard to address those challenges and to continue our goal of protecting, restoring and conserving those waterways. The streams and watersheds of Northcentral Pennsylvania are better today because of the dedication and support of many people. Happy Birthday to the Chapter and to everyone who has been part of the Chapter is some way

**To Spey or Not To Spey?
That is the Question
By: Charlie Knowlden**

No, I'm not talking about your cat. Besides, that is spelled with an "a" instead of an "e". According to Wikipedia and other sources listed at the end, Spey Casting is a technique of fly fishing that originated on the River Spey in Scotland nearly 200 years ago. It then spread to Wales, Scandinavia and other parts of Europe before coming to the Western Hemisphere. The technique can be used with a standard fly rod or by a specialized two-handed fly rod usually from 11 to 16 feet long. It is used on large rivers, ponds, lakes, and in the ocean surf and flats. Target fish include, salmon, large trout, steelhead, pike and muskies in fresh water, and blue fish, tarpon, etc. in salt water where the game fish are feeding primarily on shrimp or other baitfish. The flies used represent the bait that the fish are feeding on. They are large flies, usually streamers or zonkers that imitate moving live bait.

The major difference of Spey casting from traditional fly fishing is that the fly always remains in front of the angler. This is accomplished by one of two groups of Spey casts. The first and most common resembles the Double Haul cast used by anglers to get a longer distance with a short backcast. The major difference is that the fly stays in the water in front of the angler until the loop in the weight forward line picks it up on the forecast. Instead of the rod being held perpendicular to the water on the backcast, it is held at a 45 degree angle so that the line remains clear of the angler. This method is used when the angler needs to change direction due to current, wind, or width of the stream. The single Spey Cast is used when a wind may be blowing upstream and the angler is obstructed by obstacles behind his position. It is a little easier to control.

The main advantage of using a Spey rod is the distance that the angler is able to cast. The world record set in competition was by a Norwegian named Gehr Hansen at 215 feet with a 15 foot rod. He also set the record with an 18 foot rod at 252.6 feet. Anita Strand, also a Norwegian, holds the women's record at 143 feet. She set that record at a competition held in California.

The main reason that I have done the research and written this article is that recently our chapter received a donation of fly tying and rod building supplies from a fishing pro shop that was going out of business. Included in this donation were a number of fly rod blanks including Spey Rods. These blanks are either made by Diamondback or Sage. My research shows that each set of blanks sell for \$275 to \$500 retail. To purchase grips, guides, and reel seats to complete the rods would cost from \$50 to \$100 depending on the quality desired. We also received a selection of fly lines suitable for Spey rods. A large arbor reel would be required to hold the line and give balance to the outfit. I would like the chapter to offer these blanks and lines at a much reduced donation (price) to the members that might be interested. In addition, I would make myself available to assist anyone who wishes to build a rod.

Additional Resources:

Jack Cook, "Spey Fly Fishing"

Floyd Dean, "Spey Casting"

Tom Rosenbauer, "The Orvis Fly Fishing Guide", Guilford CT. Lyons. pp.91-96

There are additional numerous YouTube videos on Spey Casting available to view.

UPCOMING EVENTS

March 16, 2024 Yellow Breeches Anglers and Conservation Association Outdoor Show, Carlisle

March 23, 2024 Valley Forge Chapter of TU Trout Show, Lionville Middle School

March 30, 2024 PA Statewide Mentored Youth Trout Fishing Day

March 30, 2024 Mentored Youth Fishing Event on Lycoming Creek behind Bowman Field. Chapter is helping with this event

April 6, 2024 PA Statewide Opening of Trout Season

April 10, 2024 Chapter Meeting (Slate Run Brown Trout Club Tentative)

April 8 - 19, 2024 Lycoming Creek and surrounding stream clean up

April 20, 2024 Pittsburgh Sports Expo

May 4, 2024 PFBC Intro to Fly Fishing at Montour Preserve (<https://register-ed.com/events/view/206957>)

May 11, 2024 PFBC Family Fishing Program and lunch at Rose Valley Lake (<https://register-ed.com/events/view/206958>)

May 23, 2024 PFBC Virtual Intro to Kayak Fishing Program (<https://register-ed.com/events/view/206960>)



Susquehanna Chapter of Trout Unlimited
PO Box 1132
Williamsport, PA 17703 - 1132

Since 1964, the core mission of our Chapter is to work to make positive contributions to the protection, conservation and restoration of our Coldwater fisheries and their watersheds of North Central Pennsylvania

Membership Application

Name: _____

Address: _____

City: _____ State: _____ Zip: _____

Telephone: _____

Email: _____

TU does not make email addresses available to outside parties, for any reason, ever. Please help us conserve resources by providing your email address.

SEND APPLICATION AND PAYMENT TO:



Trout Unlimited
PO Box 98166
Washington, DC 20090

MEMBERSHIP CATEGORIES*

- New Members Only \$17.50
- TU Teen (\$14) (13 - 18 y/o)
- Regular (Renewal) \$35
- Life Membership (\$1500)
- Family (\$55)
- TU Business (\$295)
- Stream Explorer (\$12)
12 years old and under

PAYMENT METHOD

- Check
 - Visa
 - MC
 - AMEX
 - Discover
- Make checks payable to Trout Unlimited

Card #: _____ Exp: _____

Name on card: _____

Membership contributions are tax deductible as allowed by law

To ensure correct New Member Rebate, enter Chapter/Council #:

#044